

NW3

SS9662XLEM



New era of IP66 moving beam wash with high efficient RGBL LED source,ultra-wide zoom range, excellent beam and wash effects. Light weight and compact design, super fast and accurate XY performance. It is suitable for both outdoor or indoor events, road shows, concerts, operas, banquets and various performance.



PRODUCT PARAMETERS

Optical system

Light source	Beam angle
7*40W RGBL+RGB Ring	3.5-35°
Luminous flux	Field angle
2941lm	5-50°

Appearance

Size	290X227X375mm	Casing	Magnalium and Die-cast
Weight	10KG	Color	Black

Electrical Specs

Voltage
100-240VAC,50/60Hz

Max. Power
320W

Power Connection
power in and out

Signal socket
3pin or 5pin in and out

Control System

Pan/Tilt rotation
540°/220°(8-16bit)

Dimmer
0-100%16Bit

Cooling
Forced Convection

Display
On board Control, Custom Mode, 0-25Hz Strobe

Control
DMX512, RDM, CRMX (optional)

Con Personality
HSIC\SSP\TOUR\TR16\CMY\ZONE

Special
Pan/Tilt movement blackout, User-selectable pan/tilt ranges

Work Environment

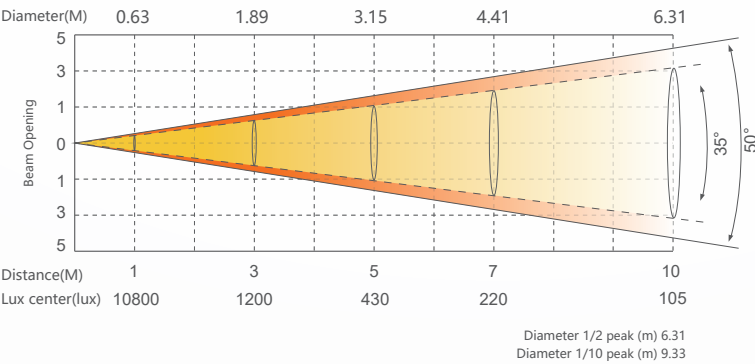
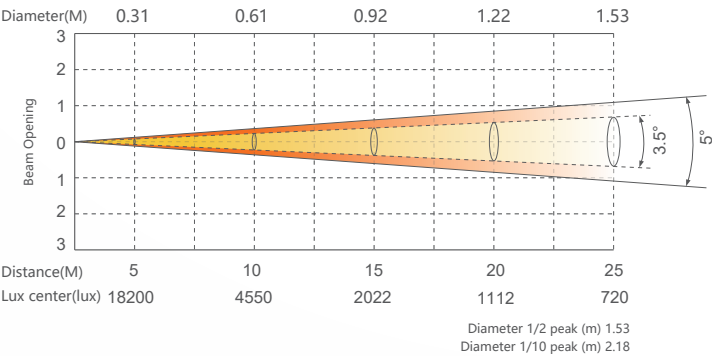
Ambient Temp
-20°C-45°C

IP Rated
IP66

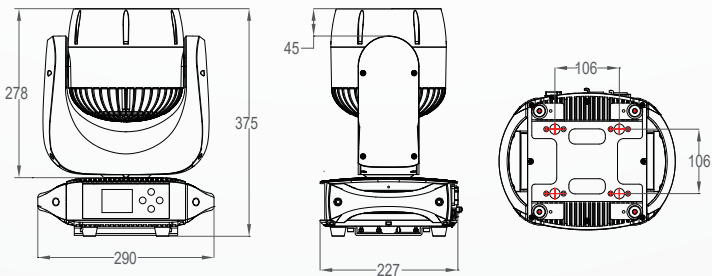
Certification

CE

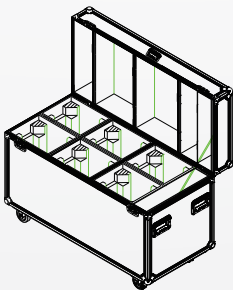
ILLUMINANCE AT DISTANCE SS9662XLEM



DIMENSIONS



ACCESSORIES (Accessories not included unless otherwise stated)



Wireless receiving module
(2440010832)

Flight case
(1320400271)